

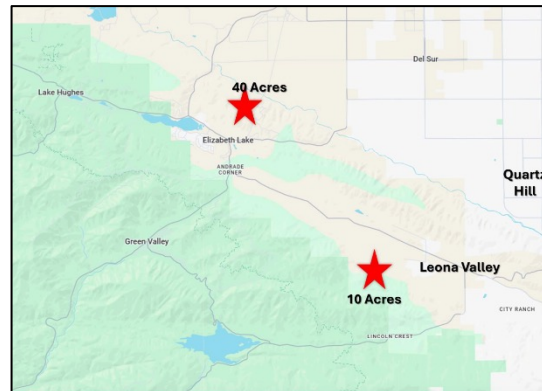
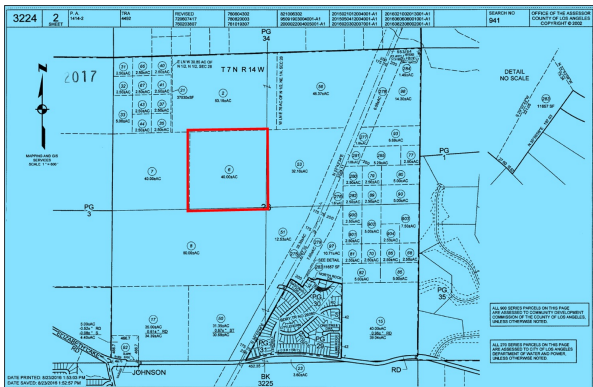
40 Acres in Leona Valley, CA 93551



Access via dirt trails

Take Elizabeth Lake Rd. to Ranch Club Rd., Turn right onto dirt road/fire road, Take the 2nd left and take it to the top. Make a right at the T, follow to property. You may have to park and walk depending on the condition of the dirt road.

Lot boundaries are approximate



Trust Auction! APN: 3224-002-006.. The public auction will take place on June 7th at 15445 Cobalt St., Space 224, Sylmar, CA at 3:00 PM. Unimproved parcel opportunity consisting of approximately 40+ acres with 360-degree views of Elizabeth Lake, the Tehachapi Mountains, and the Antelope Valley Buyers must bring a \$10,000 cashier's check in order to bid. There are no loan, appraisal, or inspection contingencies. This Property is offered together with improvements thereon as-is, where-is, with no warranties expressed or implied. The Trustee reserves the right to accept, counter, or reject all offers. No Court Confirmation Required! For this property, prospective buyers unable to attend the live auction in person, may submit their sealed bid with proof of funds and a cashier's check for \$10,000 made payable to NDA, Inc. At the live auction the auctioneer, will place bids on your behalf in absentia (proxy bid). Note: Prospective buyer must sign the purchase contract and all disclosures prior to the auction.

Contact NDA INC at rhett@nda-re.com for details.

Please visit BidNDA.com and click on the property for additional information.

Stuart Lautman Trust

NDA
Real Estate



Rhett Winchell

DRE# 00867471

Rhett@NDA-RE.com

(818) 371-0000

NDA-RE.com