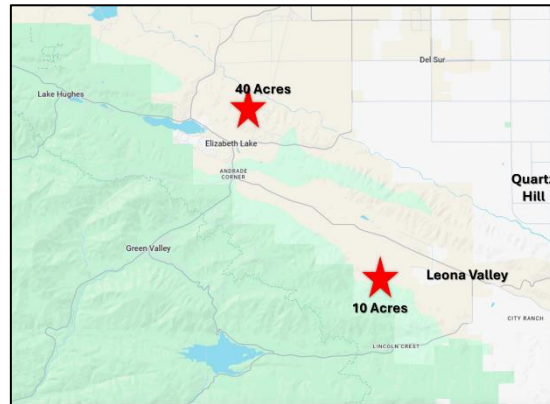
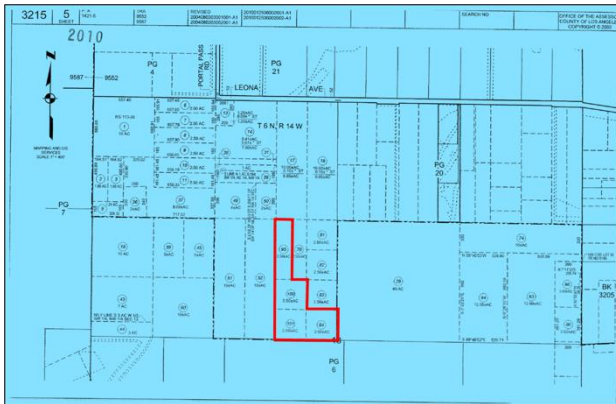
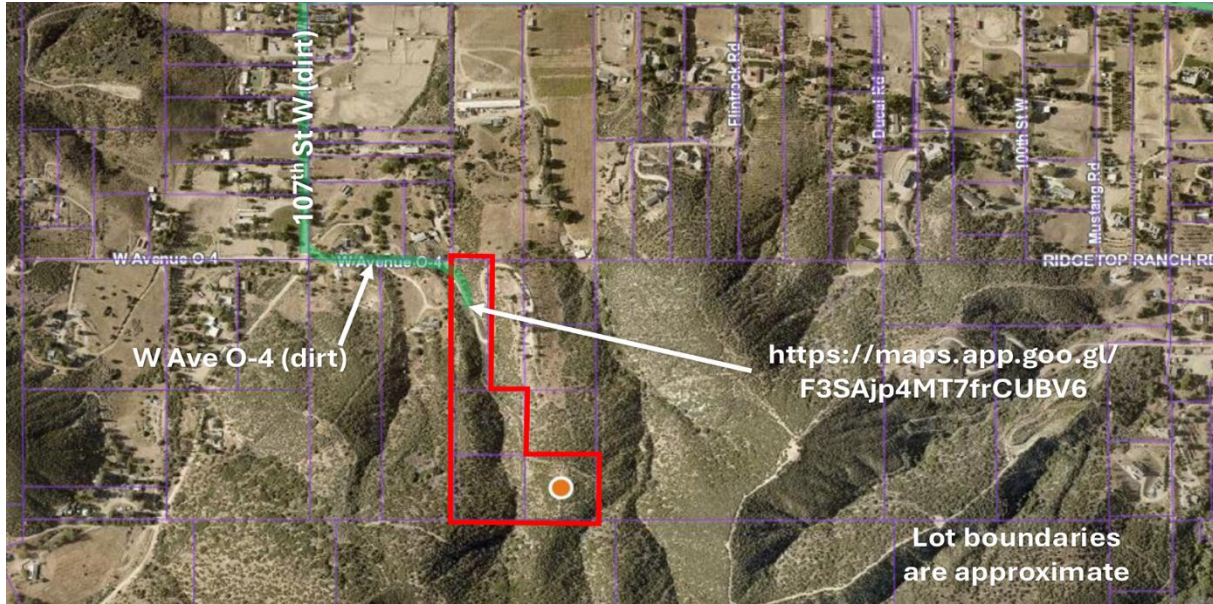


10 Acres in Leona Valley, CA 93551



Trust Auction! The property consists of four unimproved parcels totaling approximately 10 acres to be sold at Public Auction. APNs: 3215-005-084, 3215-005-095, 3215-005-100, and 3215-005-101. The public auction will be conducted on June 7th at 3:00 PM at 15445 Cobalt St., Space 224, Sylmar, CA. Great opportunity for investors, or land buyers seeking multiple contiguous parcels. Buyers must bring a \$10,000 cashier's check in order to bid. There are no loan, appraisal, or inspection contingencies. This Property is offered together with improvements thereon as-is, where-is, with no warranties expressed or implied. The Trustee reserves the right to accept, counter, or reject all offers. No Court Confirmation Required! Please visit BidNDA.com and click on the property for additional information. For this property, prospective buyers unable to attend the live auction in person, may submit their sealed bid with proof of funds and a cashier's check for \$10,000 made payable to NDA, Inc. At the live auction the auctioneer, will place bids on your behalf in absentia (proxy bid). Note: Prospective buyer must sign the purchase contract and all disclosures prior to the auction. Contact NDA INC at rhett@nda-re.com for details.
Stuart Lautman Trust

NDA
Real Estate



Rhett Winchell
DRE# 00867471
Rhett@NDA-RE.com
(818) 371-0000
NDA-RE.com